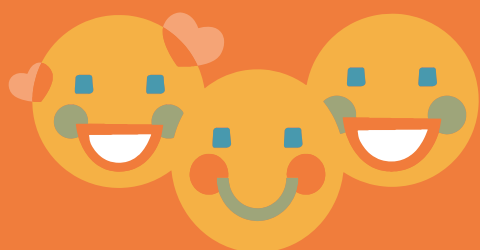


SEL DAY FACTS

SEL is not just for adolescents. Teachers with high levels of social competence are **better able to protect themselves from burnout.**



Increases in empathy significantly predict **less aggressive behavior.**

When looking at the association between SEL skills in kindergarten and young adult outcomes: **Kindergartners who are stronger in SEL competence are more likely to** graduate from high school, complete a college degree, and obtain stable employment in young adulthood.



4 in 5 teachers **want more support** to address students' social and emotional development.

There is an **\$11 return on every \$1** invested in social emotional learning curriculum.





CITATIONS

1. (Jennings, P.A. & Greenberg, M.T. (2009) The Prosocial Classroom: Teacher Social and Emotional Competence in Relation to Student and Classroom Outcomes. American Educational Research Association.)
2. (McMahon, S. D., & Washburn, J. J. (2003). Violence Prevention: An Evaluation of Program Effects with Urban African American Students. The Journal of Primary Prevention, 24(1), 43–62.)
3. (Damon E. Jones, Mark Greenberg, and Max Crowley. Early Social-Emotional Functioning and Public Health: The Relationship Between Kindergarten Social Competence and Future Wellness. American Journal of Public Health: November 2015, Vol. 105, No. 11, pp. 2283-2290.)
4. (Bridgeland, J., Bruce, M., & Hariharan, A. (2013). The missing piece: A national teacher survey on how social and emotional learning can empower children and transform schools. A report for CASEL. Washington, DC: Civic Enterprises)
5. (Belfield, Bowden, Klapp, Levin, Shand & Zander. (2015). The economic value of social and emotional learning. New York, NY: Center for Benefit-Cost Studies in Education: Teachers College, Columbia University.)